

**ROLL UP DOORS DIRECT**

[www.rollupdoorsdirect.com](http://www.rollupdoorsdirect.com)

**1.877.RLDOORS**

**1.877.753.6677**

## DOOR INSTALLATION INSTRUCTIONS SERIES 3652

**800121-0000**



### WARNING

A rolling door is a large heavy object that moves with the help of springs under extreme tension and electric motors. Moving objects and springs under tension and electric motors can cause serious injuries or death. For your safety and the safety of others, follow these instructions.



### CAUTION

Use proper lifting equipment and correct lifting procedures to avoid damage or injury.

### PUSH-UP OPERATION SHOWN

LEFT TENSION END SHOWN  
RH OPPOSITE

RIGHT DRIVE END SHOWN  
LH OPPOSITE

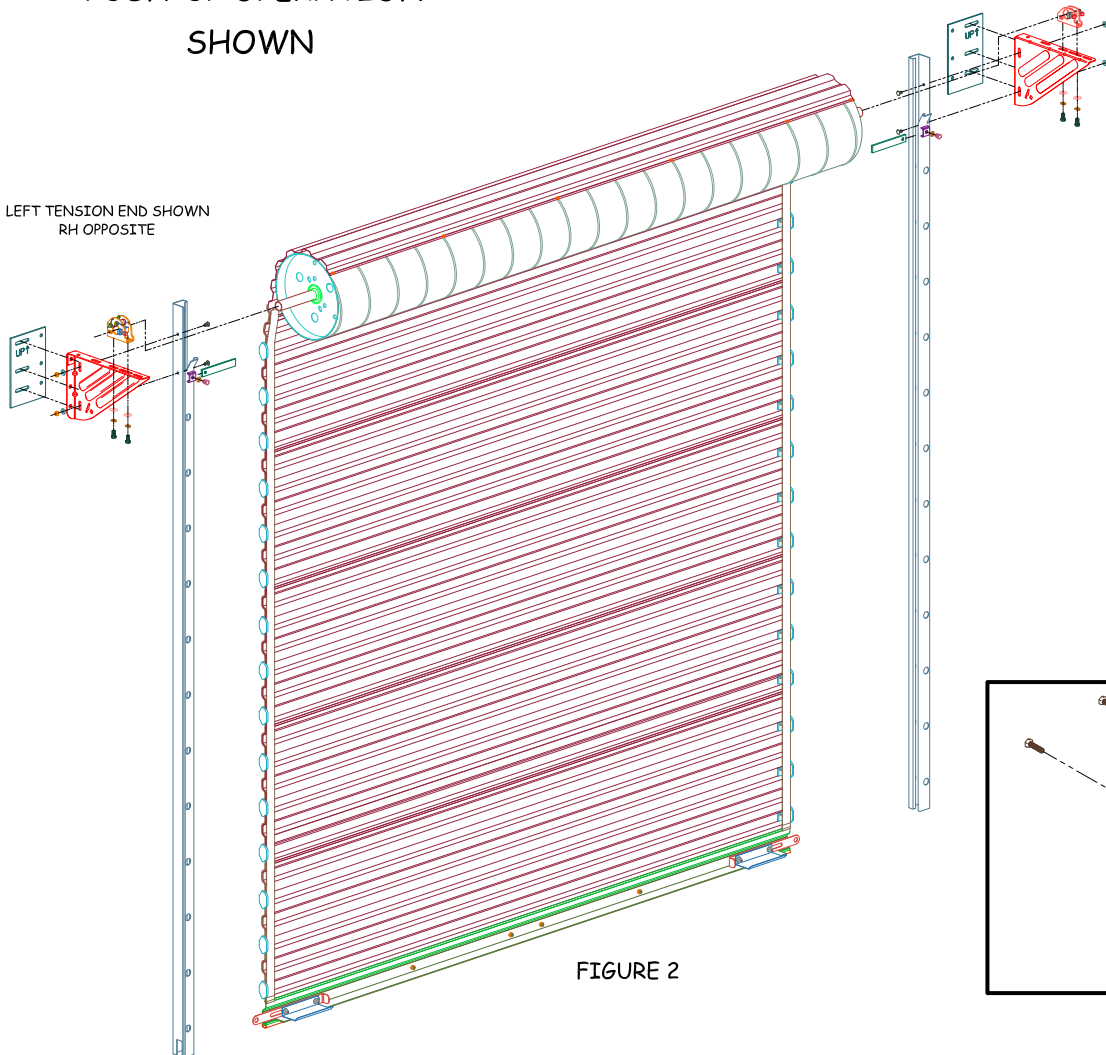
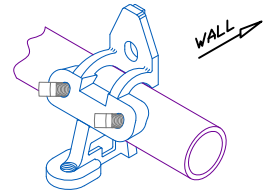
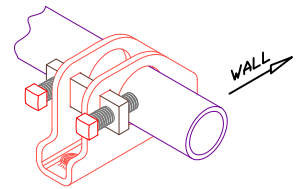


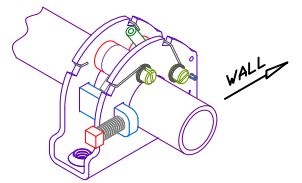
FIGURE 2



CAST AXLE SUPPORT BRACKET - 1-5/16"  
HAND CHAIN OPERATION  
ONE EACH PER DOOR



STAMPED AXLE SUPPORT - 1-5/16"  
PUSH-UP & ELECTRIC OPERATION  
ONE EACH PER DOOR



TENSIONER ASSEMBLY - 1-5/16"  
ONE EACH PER DOOR

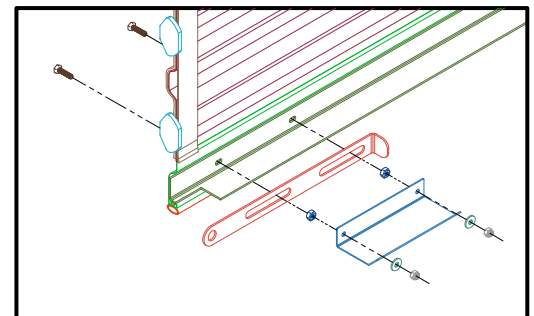


FIGURE 1

**IMPORTANT NOTE:** Do not cut tape and plastic wrap that holds the door in a roll until you are directed to do so in step 14D. Roll Up Doors Direct cannot guarantee or accept responsibility for doors that are not installed as directed. Please read and understand all instructions before beginning the installation process.